

## LIST OF PAPERS PUBLISHED IN THE *EARLY RAILWAYS* VOLUMES

We regret that Volumes 1, 3 and 4 are out-of-print. Copies of Volume 2 are still available from the Newcomen Society -- go to <http://newcomen.com/publications/books/>

### *EARLY RAILWAYS* [vol. 1]

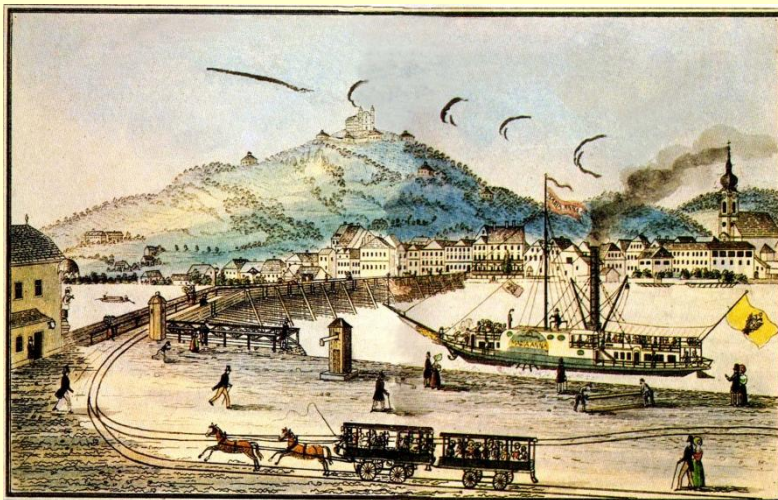
- |  |  |
|--|--|
| <i>Sir Neil Cossons</i>                          | Keynote address  |
|  | ORIGINS  |
| <i>Dr M J T Lewis</i>                            | Railways in the Greek and Roman world  |
| <i>Lars Olov Karlsson</i>                        | A rediscovered early rail wagon  |
|  | WAGGONWAYS   |
| <i>Dr John van Laun</i>                          | Pre-1840 trackways in south Wales  |
| <i>Dr David Gwyn</i>                             | Transitional technology: the Nantlle Railway   |
| <i>Rev Dr R L Hills</i>                          | The railways of James Watt   |
| <i>Prof Roland Paxton</i>                        | An engineering assessment of the Kilmarnock & Troon railway (1807-46)  |
| <i>Mike Wilmott</i>                              | Early railways in Dorset: the industrial railways of Purbeck   |
|  | MECHANISATION  |
| <i>Andy Guy</i>                                  | North eastern locomotive pioneers 1805 to 1827: a reassessment   |
| <i>Jim Rees</i>                                  | The strange story of the <i>Steam Elephant</i>   |
| <i>Colin E Mountford</i>                         | Rope haulage: the forgotten element of railway history   |
| <i>Grahame Boyes</i>                             | An alternative railway technology: early monorail systems  |
| <i>Richard Gibbon</i>                            | Rings, springs and things: the national collection pre 1840  |
|  | TRANSFER OF TECHNOLOGY   |
| <i>Mike Clarke</i>                               | The first steam locomotives on the European mainland   |
| <i>Ian Cowburn</i>                               | The origins of the St Etienne rail roads, 1816-38: French industrial espionage and British technology transfer |
| <i>Prof Frederick C Gamst</i>                    | The transfer of pioneering British railroad technology to North America  |
| <i>Herb MacDonald</i>                            | The Albion mines railway of 1839-40: some British roots of Canada's first industrial railway                   |
| <i>Dr Michael R Bailey &amp; John P Glithero</i> | Learning through restoration: the <i>Samson</i> locomotive project   |
|  | THEMATIC STUDIES   |
| <i>Dr John Banham</i>                            | Coal, banks and railways   |
| <i>Dr Winifred Stokes</i>                        | Early railways and regional identity   |
| <i>J H Baldwin</i>                               | The Stanhope and Tyne Railway: a study in business failure   |
| <i>Dieter W Hopkin</i>                           | Reflections on the iconography of early railways   |



The first paper delivered at the first Conference examined railways in the Ancient Greek and Roman world, including the stone-track *Diolkos* across the Isthmus of Corinth, laid in the 6th century BC

## EARLY RAILWAYS 2

<i>Prof Colin Divall</i>	Keynote address: Beyond the history of early railways
	HISTORY
<i>Dr Barrie Trinder</i>	Recent research on early Shropshire railways
<i>Robert Stephenson Roper</i>	Robert Stephenson, senior, 1788-1837
<i>Dr David Gwyn</i>	Artists, Chartists, railways and riots
<i>David Hodgkins</i>	Success and failure in making the transition to a modern railway: the Liverpool & Manchester and Cromford & High Peak
<i>Andy Guy</i>	Early railways: some curiosities and conundrums
<i>Dr Winifred Stokes</i>	Who ran the early railways? The case of the Clarence
	INFRASTRUCTURE
<i>Dr John van Laun</i>	In search of the first all-iron edge-rail
<i>Dr M J T Lewis</i>	Bar to fish-belly: the evolution of the cast-iron edge-rail
<i>Colin E Mountford</i>	Researching rope-haulage — a case stud: the Lambton Railway, 1800-1835
	MECHANICAL
<i>Sheila Bye</i>	John Blenkinsop
<i>John Crompton</i>	The Hedley mysteries
<i>Paul Reynolds</i>	George Stephenson's 1819 Llansamlet locomotive
<i>Jim Rees</i>	The Stephenson standard locomotive (1814-1825): a fresh appraisal
<i>John Liffen</i>	The Patent Office Museum and the beginnings of railway locomotive preservation
<i>Rev Dr Richard L Hills</i>	Richard Roberts' experiments on the friction of railway waggons
<i>Richard Gibbon &amp; Richard Lamb</i>	'Running wi' your breeks down': an investigation of coupling rod resistance in a four-coupled locomotive
	OVERSEAS
<i>Dr Stefano Maggi</i>	An early railway in Tuscany: Follonica–Montebamboli
<i>Herb Macdonald</i>	Reconsidering the origins of Canada's first locomotive-powered railway: the Champlain & St Lawrence, 1825-34



The railway from Linz to what is now České Budějovice was one of the earliest to link two cities, and began operations in 1832

### EARLY RAILWAYS 3

<i>Andrew Scott</i>	Keynote address: 'First' impressions — some reflections on 2004, early railway's year of anniversaries
	HISTORY
<i>Dr M J T Lewis</i>	Reflections on 1604 [this paper is mounted on this website]
<i>Dr John van Laun</i>	New light on the wooden waggonways at Whitehaven harbour
<i>John Goodchild</i>	The Lake Lock Rail Road
<i>John Liffen</i>	The iconography of the Wylam waggonway
<i>Colin E Mountford</i>	The Hetton Railway — Stephenson's original design and its evolution
<i>Herb MacDonald</i>	The Cape Breton waggonways of the General Mining Association, 1830-1855
<i>Anthony Coulls</i>	The Corris, Machynlleth & River Dovey tramroad
	DEVELOPMENT
<i>Alan M Levitt</i>	How America discovered the railway
<i>William L Withuhn</i>	Abandoning the <i>Stourbridge Lion</i> — business decision-making, 1829: a new interpretation
<i>Winifred Stokes</i>	The importance of the northeast viewers in the development of early railways and locomotives
<i>Niall Ferguson</i>	Anglo-Scottish transfer of railway technology in the 1830s
	MECHANICAL
<i>Jim Rees &amp; Andy Guy</i>	Richard Trevithick and pioneer locomotives
<i>Roger Darsley</i>	Some considerations on the origins of the chaldron waggon in the northeast of England
<i>Rev Dr Richard L Hills</i>	The development of machine tools in the early railway era
<i>Helen Gomersall</i>	The Round Foundry of Leeds
<i>Dr Michael R Bailey</i>	Restaging the Rainhill Trials, learning from replicas
<i>Richard Lamb</i>	Something of a <i>Novelty</i>
<i>Peter Davidson &amp; Dr John Glithero</i>	Analysis of locomotive performance

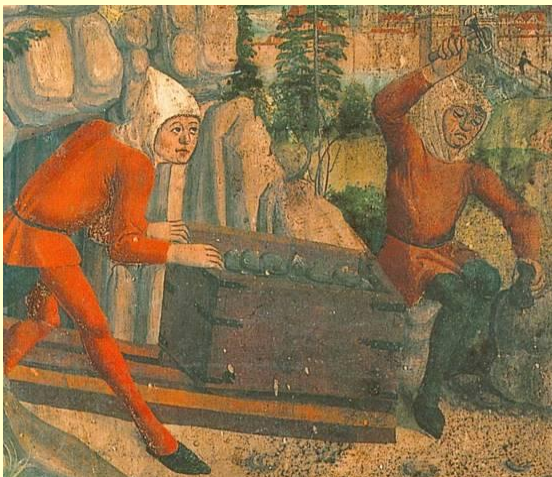


Research into early railways has led to the reconstruction of accurate replicas of some of the first steam locomotives. Beamish Museum's replica *Puffing Billy* is put through his paces on the Boekelo to Hengelo railway in Holland.



## EARLY RAILWAYS 4

<i>John Liffen</i>	Trevithick Bicentenary Address: Searching for Trevithick's London railway of 1808
<i>Dr Chris Down</i>	The Maltese cart ruts as railways: an experimental reconsideration
<i>Geoff Smith-Grogan</i>	Rutways in Cornwall
<i>Warren Allison, Samuel Murphy &amp; Richard Smith</i>	An early railway in the German mines of Caldbeck
<i>Dr Peter King</i>	The first Shropshire railways
<i>Neil Clarke</i>	John Wilkinson's railway at Willey
<i>Michael Messenger</i>	Early railways in the South-West
<i>Stephen Hughes</i>	The emergence of the public railway in Wales
<i>Dr David Gwyn</i>	'What passes and endures': the early railway in Wales
<i>Sheila Bye</i>	Regarding old rails: a Middleton Railway miscellany
<i>Robert Hartley</i>	The Coleorton Railway
<i>Miles Macnair</i>	The Central Junction Railway of 1820: a study in historical perspective
<i>Dr Michael Lewis</i>	Constructional and temporary railways
<i>Dr Winifred Stokes</i>	A City job: the London shareholders in the Clarence Railway
<i>Herb MacDonald</i>	The Rideau waggonway that never was: rail vs canal in the defence of Canada, 1814-25
<i>Roger Darsley</i>	The Durban Bluff Railway and the early railway scene in South Africa
<i>Jim Rees</i>	The <i>Sans Pareil</i> model: a pivotal moment
<i>Dr Michael Bailey &amp; Dr John Glithero</i>	Turning a blind eye to <i>Braddyll</i>
<i>Dieter Hopkin</i>	Timothy Hackworth and the Soho Works, circa 1830-50
<i>Andy Guy</i>	Just add boiling water: the elusive railway kettle, 1804-25
<i>Dr Niall Ferguson</i>	Locomotives of the Dundee & Arbroath Railway: timely new evidence?
<i>Colin E Mountford</i>	The Bank Top engine, Burnhope, Co Durham
	APPENDIX
<i>Helen Gomersall &amp; Andy Guy</i>	A research agenda for the early British railway



This engraving of 1556 shows a mine *hund* wagon from continental Europe. *Early Railways 4* included a paper on the discovery of a similar railway which had been installed in a mine in the English Lake District in the 1560s